

December 2024



# CATLINS COAST INC. NEWSLETTER

**Kia Ora & Welcome**

**Enjoy the newsletter from  
Catlins Coast Inc.**

If you would like to contribute to the next edition of the quarterly newsletter please email Catlins Coast Project Coordinator [projects@catlins.org.nz](mailto:projects@catlins.org.nz)

*Photograph by*

*Cicell Jenks*

**Join us on Facebook and Instagram**

<https://www.facebook.com/catlinscoastnz>

<https://www.instagram.com/catlinscoast.nz/>

**Catlins Coast Official Website**  
[www.catlins.org.nz](http://www.catlins.org.nz)

***The newsletter is a  
great way to 'share'  
information on what  
is happening in The  
Catlins!***



*Photograph by Tony Somerville— The Catlins River Walk*

# WHAT'S HAPPENING IN THE CATLINS



## Catlins Coast Incorporated (CCI)

*From the Chair*

Rural Communities would not survive without the input from the many volunteers.

A big shout out and thank you to all who volunteer in our Community in any way at all, e.g., FENZ, St John, SARS, Lions and all other Community Groups.

I want to take this opportunity to highlight the input of the Volunteers in Catlins Coast Inc. (CCI)

Project Coordinator, Lisa Biginato and I headed on a road trip to Invercargill last week to pick up the new Catlins 'Purple' Map, Visitor Guides and laminated Care Code, doing many deliveries on the return trip. The new resources are printed on forest sustainable paper and The Catlins area has been shaded on the map.

The resources are now in storage with us and our committee will deliver them as needed and when we are able.

The reason CCI pick up and deliver the resources (map, visitor guide, care code) because we are passionate about The Catlins and we want to support our community so it helps to keep the cost down for our advertisers/community.

A distributor (Naked Creative – Southland) for the CCI Visitor Guide, charges for storage and delivery which CCI also have to take into account as part of the costs for the resources. The costs would be unsustainable if all our resources were stored and delivered solely by them.

Should anyone require either maps and/or visitor guides please contact [projects@catlins.org.nz](mailto:projects@catlins.org.nz)

All the best for the coming Visitor Season, and the Festive Season.

Hilary McNab



## **..... Continued CCI**

CCI continue to support Catlins Biodiversity and a Catlins Biodiversity group has been determined with Cody Hartvigsen as Chair, Rachel Napier as Deputy Chair, Gavin White as Treasurer and Lisa Biginato (on behalf of CCI) as Secretary. The Community Led Pest Control 2024-2034 is the guiding document for the group, with initial focus on possums.

Please note, due to technical issues, we have a new CCI Facebook <https://www.facebook.com/catlinscoastnz>

The development of The Catlins-Clutha Information layby (located on the Owaka Highway just outside of Balclutha heading South) continues. A picnic table has been built by the Catlins Area School (to be installed) and the planting on the layby is to be reviewed.

Have a great Christmas and New Year

Lisa Biginato

CCI Project Coordinator

[projects@catlins.org.nz](mailto:projects@catlins.org.nz)

# Owaka Going Forward

## The Hina Hina walk/cycle trail

The Hina Hina walk/cycle trail was initiated and delivered by Owaka Going Forward with amazing support from local farmers, community members, Clutha District Council (CDC), Catlins Coast Inc, and funding organisations (to date from The Trust Community Foundation, Otago Community Trust, CDC Long Term Plan, Lottery Community).

As part of the project (before it commenced), initial discussion concluded to focus on a small section of track in the first instance to determine if it could be delivered successfully. To date, it has taken 18 months planning and delivery to get to this point.

The 2.5km (one way) track starts at the newly developed carpark (Esplanade reserve) at the Hinahina Bridge and connects to the Department of Conservation Reserve (at the back of the Pounaweia campground).

The track is work in progress as still has some work to be carried out, hence can be walked but with limited biking access at this stage. The track is suitable for all ages and is marked with pink markers with some signage at the carpark and halfway along the track.

There has been a range of volunteers who have worked on the project to date such as Richard and John Latta to name but a few, with other support groups expressing interest in helping e.g., Forest & Bird, Catlins Area School.

It is a credit to all those who have been involved and/or worked on the track to date, to get it where it is today, with the Long term intention is to connect Owaka with Pounaweia via a loop track.

The track is now open for the public and we invite everyone to come and enjoy the experience. To date, feedback from the community to date has proven overwhelmingly positive and the intent is to continue further sections of the track into 2025.



# The Yellow-eyed Penguin Trust (YEPT)



The hoiho breeding season 2024/2025 has begun. Nest searching took place up and down the south-east coastline (including on Stewart Island) a couple of months ago, and now we have the important job of supporting parents and chicks through to the fledging period early next year.

The October severe weather event coincided for the first week of nest searching and thus was an added obstacle with access to some reserves temporarily obstructed. There is also an increased risk of mosquitos (and therefore avian malaria) due to the vast number of pools of standing water across Catlins and Otago Peninsula still.

As always, hoiho conservation is a co-operative effort and we continue to work closely with the Department of Conservation, The OPERA and the Dunedin Wildlife Hospital, to help these birds out.

Please keep an eye along the coastline for any injured penguins as they can be found at any time of year. *If you see an injured penguin phone the Department of Conservation (0800 DOC HOT) or, if you're at Long Point you can call Cat on 021 0244 7643.*

Keep up to date with our work:

- Website - [www.yellow-eyedpenguin.org.nz](http://www.yellow-eyedpenguin.org.nz)
- Facebook - <https://www.facebook.com/veptrust>
- Instagram - <https://www.instagram.com/yelloweyedpenguintrust>

## Bird Flu

Forest & Bird is sharing the Department of Conservation's information about bird flu (highly pathogenic avian influenza H5N1, or HPAI) with you, so we are prepared and know how to act appropriately to minimise the risks to our native wildlife.

Bird flu is a highly contagious virus that can affect any type of manu, and is spreading around the world right now. The virus isn't in New Zealand, but we must be on the lookout for signs of the disease, as birds and mammals like seals can get very sick and die from it.

**Signs to look for in birds are sudden death, tremors, weakness, paralysis, difficulty breathing, and diarrhoea.**

Here are some simple ways we can all help:

- Keep pets away from wildlife
- Stay away from nesting birds on beaches and rivers
- When visiting national parks, nature reserves (including Forest & Bird reserves) or agricultural areas, keep shoes and clothes clean to avoid spreading disease
- Report groups of three or more sick or dead birds, marine mammals, or other wildlife to the Ministry for Primary Industries' exotic pest and disease

hotline: 0800 80 99 66

Don't touch, handle, or collect dead or dying birds

## .....***Continued Bird Flu***

There is no cure for bird flu and once it spreads in wildlife, it can't be eradicated. But the Department of Conservation (DOC) has a plan to mitigate risks to our native manu which focuses on actions to detect the virus, reduce the spread, and protect threatened species.

We can minimise the spread with strong biosecurity practices and by not disturbing wildlife. We can also support the health and resilience of threatened birds with predator control and breeding programmes.

In some cases, vaccination might be an effective tool during outbreaks to prevent extinction of bird species where feasible. DOC is doing trials to work out how effective vaccination could be in protecting our most threatened species, but at the moment it won't be something that Forest & Bird will do.

Please go to the [Department of Conservation](#) and [Ministry for Primary Industries](#) websites for more information.

**Ngā mihi nui**  
**The Forest & Bird team**



Department of  
Conservation  
*Te Papa Atawhai*

## Department of Conservation update

### Mohua Survey

During October, the Department of Conservation completed the annual mohua survey in the Beresford Range. While the report is yet to be completed to confirm the results, it was felt that more mohua were encountered this year than last at the last count.

This is encouraging as numbers have been trending downward over the last three years. Birds have been surveyed systematically in the Beresford since 1998 and the Catlins has a nationally important population of mohua which makes up 25% of the total population. This is the easternmost group of Mohua, which makes them genetically important too.

### Wildlife reminder

You may encounter sealions, seals, nesting seabirds, and other wildlife in and around coastal areas. Please remember to keep your dogs out of restricted areas and on a lead, be vigilant at all times and give all wildlife plenty of space.

Enjoy the wildlife from a distance, they are a precious and unique part of Aotearoa's biodiversity!

If you have any concerns about sealions, other wildlife or people's behaviour, please ring the DOC emergency hotline 0800 DOC HOT (0800 362 468).

21 November 2024

## Catlins ecosystems plan ready for action

A new community-led plan to protect and enhance the Catlins' environment is set to take effect after being endorsed by Otago Regional Council yesterday.

The Council also approved a recommended framework for actions and \$100,000 in funding to help kick it off.

ORC Councillor and Catlins Integrated Catchment Working Group chair Lloyd McCall says, "This plan, which has been developed by the Catlins Integrated Catchment Group

(ICG), is the first Catchment Action Plan for Otago and represents significant time, effort and collaboration from all parties involved."

"It acknowledges that protecting and enhancing environmental values can also benefit the social, economic, and cultural well-being of Catlins people and visitors – Ka ora te whenua, ka ora te tangata; When the land is well, we are well."

The plan builds on the work that mana whenua, communities and local government are already doing to protect and manage their place and serves as a focus for new actions and projects, he says. It can also be used to guide Otago Regional Council's work programmes.

"It's important to note that the plan reflects the current concerns of the Catlins' mana whenua and community and is based on current available knowledge. The plan provides the basis and the beginning of a suite of actions that will continue and evolve as we gain more knowledge," says Cr McCall.

The plan centres on six environmental values that represent the area's major ecosystems and the native species and habitats within them. The plan also outlines the "pressures" or human activities which impact the six values, such as run-off, Invasive introduced plants and mammals, and land clearing.

"Seven strategies have been developed to address these pressures, aimed at introduced mammals and birds, weeds, fish interaction, overharvesting, sustainable farming, sustainable forestry, and human behaviours," says Cr McCall.

## .....***Continued Catlins ecosystems plan ready for action***



***Caption: Otago Regional Councillors Lloyd McCall and Kate Wilson explore a Catlins forest with Gavin White, a founding member of the Catlins Integrated Catchment Group.***

Catlins Integrated Catchment Group chair Grant Bradfield says, "Being involved in the making of this environmental plan has been both challenging and rewarding."

"The Catlins has not just a natural beauty but contains a diverse array of landscapes, waterways, native fauna, and wildlife. Consequently, the resulting plan is complex, but it fairly reflects the environmental challenges of the area. Our hope is that this plan will be used to protect and enhance this wonderful place that we have been blessed with."

The Catlins Catchment Action Plan has been developed collaboratively using the knowledge and experience represented on the ICG, including community involved in agriculture, forestry, conservation, tourism, and recreation, as well as representatives from mana whenua, Clutha District Council, Department of Conservation and ORC.

"The plan will be monitored and reviewed regularly to allow new information and any lessons learnt to be included– making it a 'living' plan," says Cr McCall.

The plan can be found on The Catlins Catchment Action Plan online, interactive hub: [The Catlins](#)

This will also be where we will track and show progress against the plan's goals and strategies as it progresses, he says.

## .....*Continued Catlins ecosystems plan ready for action*



*Caption: The Catlins Catchment Action Plan area is bounded to the north by the Koau Branch of the Clutha/Mata-au River and to the south by Waiparu head (on the Otago Southland boundary at Wallace beach). Inland the boundary extends to the source reaches of the Puerua, Ōwaka, Catlins, Tahakopa and Chaslands Rivers. The marine boundary extends to the twelve nautical mile territorial sea limit.*

### **Background**

Otago Regional Council's Integrated Catchment Management programme followed decisions in the Long-Term Plan 2021-31. The Catlins was selected by council as the pilot Catchment Action Plan area.

Integrated Catchment Management is a whole-of-landscape approach that uses the catchment as the boundary. Managing the environment at a catchment scale looks at the landscape from the mountains or headwaters of the catchment down to the sea, reflecting a 'Te Ao Māori' concept of inextricable connection between people and their environment, and between every element of our natural world – ki uta ki tai / mountains to the sea.

A Catchment Action Plan is a non-regulatory plan for the management and conservation of an entire catchment or catchments, building on the work that iwi, communities, and local government are already doing to protect and manage their place.

These plans are not only about freshwater, but also terrestrial, estuarine, and marine ecosystems, land and soils, and human values, including livelihoods, mahika kai and wāhi tūpuna.

**THINGS TO MARK ON YOUR  
CALENDAR FOR THE CATLINS!**

**ART SOUTH OTAGO**



## **An Artful Summer**

Cash & Carry Art Exhibition  
November 25th 2024 –  
January 25th 2025

**Owaka Museum Community  
Gallery**

Take home original art by local artists!

# MANAGING NATIVE PLANTINGS WITH GLEN RILEY

Have you been planting natives and want to know "what now"?  
Glen Riley will share some ideas on approaches to maintenance and  
management. Bring your questions! Join us on Friday 6th of December for a  
discussion about practical management of native plantings.

## Location

Cullens Farm,  
Glenomaru  
Valley Road,  
Glenomaru  
(follow the flags).

**FRI 6TH DEC  
12PM**

**LUNCH  
PROVIDED**

Supported by Habitat Restorations  
Aotearoa



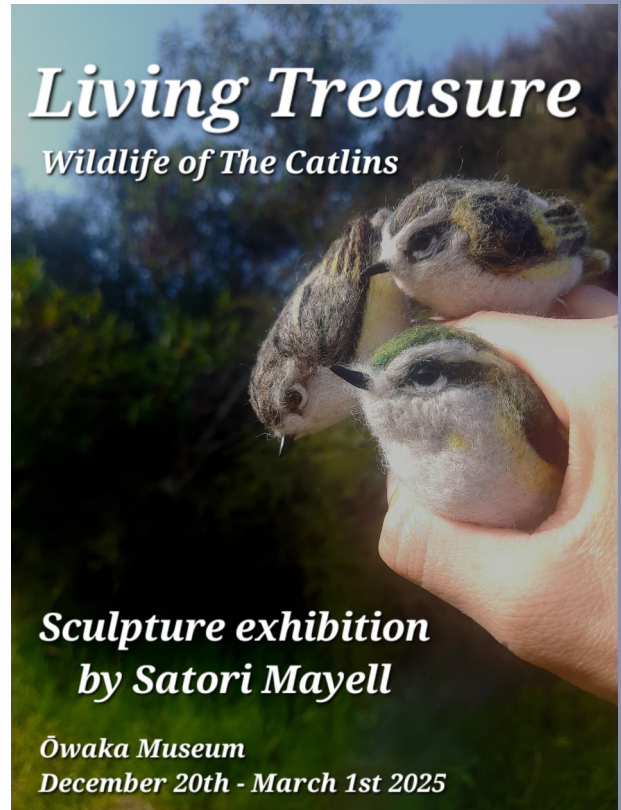
With the spring growth and recent flooding, its time for some maintenance of your native plantings. We have Glen Riley from Habitat Restorations coming along to present and answer questions at Cullens Farm on Glenomaru Valley Road Friday 6<sup>th</sup> December. It's a busy time of year so will be short and sweet 12noon-2pm.

If you can, let me know if you are coming for catering purposes, but also feel free to just turn up if it works out on the day.

Rebecca Begg

021 136 0765

# Owaka Museum



Satori is a Christchurch-based artist who has recently been caretaking the Forest and Bird Lodge at Tautuku. She is a very keen conservationist involved in many projects around New Zealand. Luckily for us she has still found time to create a Mini-Exhibition of amazing felted birds and animals. These will make unique, unusual, and excellent Xmas gifts.

## South Otago Forest & Bird

# Catlins' Bat nights!

**Saturday 28 December 9.30pm**

**Saturday 18 January 9.30pm**

**Friday 7 February 9pm**

**Catlins River Rd, Tawanui**  
meet 1km before campsite

(carshare may be possible: meet outside  
the Lumberjack 40mins before start)

***BOOKING ESSENTIAL!***

For more details & offers/requests for car  
shares –  
contact (**text is best!**): Annette 0274 158 168  
annetepowaka@gmail.com

Find out more about our local bats  
and the moths they may be eating!

We don't walk far – bring a chair if  
you like. Wear warm clothes as it  
gets cool later on. Also **sturdy**  
**footwear and bring a torch.**

**All equipment provided.**  
**Free – koha welcome!**

NB. Will be cancelled if weather  
is very cold or wet

# NEW YEARS EVE 2024 POUNAWEA



Start Time: 6 pm



Admission: \$10.00

Cash Only – No Eftpos

Children 11 years & under: Free



Chocolate Wheel



Pikelets & Cream



BBQ



Glow Products

**This is the FINAL EVENT our group will be organising.**

If there is someone – be it a group of individuals or an organisation - who would be willing to take it on we are willing to work with you by passing on our knowledge of what we have done. Please give it some thought and get in touch if you are interested in taking it on.

We can be contacted by email: [pounaweapicnicgroup@gmail.com](mailto:pounaweapicnicgroup@gmail.com)

Facebook: at "Pounawea New Years Eve Events & Fireworks"

Phone/Text: 027 459 3659

Mystery Bottle Auction 9.30p.m.



(must be 18+years to bid)



Live Band - 8 pm

Fireworks  
Display  
Midnight

# Kākā Point Market @ the Willsher Bay Domain

12:35 📶 📶 🔋

← Kaka Point Commu... 9+ ✎ 🔍

MUST PROVIDE THEIR OWN MARQUEE AND TABLES

[See insights and ads](#) Boost post

👍 2

👍 Like    💬 Comment    🔗 Copy    ➦ Share

---

 **Kaka Point Community Market Day** ⋮  
Posted by Bronwyn Maguire  
16 Oct · 🌐



**KAKA POINT COMMUNITY  
MARKET DAY**

Sunday, January 12th 2025 | 10am-3pm

Food Trucks • Stalls • Pimms Tent

SEE YOU AT OUR FANTASTIC NEW VENUE  
-WILLSHER BAY DOMAIN-

🏠    📄    +    🔔    

## South Otago Forest & Bird



# Summer Discoveries

**Saturday 18<sup>th</sup> January 2025**  
**1-3pm Papatowai**

Come on a wander through the bush and discover insects, fungi, birds and plants, big and small, and learn a little of their lives.

A family activity suitable for ages 7 +

Everyone welcome. Children must be accompanied by an adult. Free for members, or koha for non-members.

**Full details on booking.**

**Booking essential:**

[southotago@kcc.org.nz](mailto:southotago@kcc.org.nz)



## South Otago Forest & Bird

***Do your New Year's resolutions include getting more exercise? Or spending more time in our beautiful Catlins forest?***

***Here's how to get 2025 off to a great start.***



**Sun 19th Jan  
1:00pm**

# **Guided Bush Walk (8 km) on the Long Track at the Lenz Reserve**



**Forest & Bird**  
TE REO O TE TAIAO | Giving Nature a Voice

***Meet: Lenz Reserve car park  
614 Chaslands Highway***

***Bring snack, water, all weather clothing & solid footwear. For more information/cancellations:***

[facebook.com/ForestAndBirdSouthOtago](https://facebook.com/ForestAndBirdSouthOtago)

Jim Young 03 4158532 027 440 9529 [janejimmyoung@slingshot.co.nz](mailto:janejimmyoung@slingshot.co.nz)

Roy Johnstone 03 4181319 [johns-stones@rivernet.co.nz](mailto:johns-stones@rivernet.co.nz)

## South Otago Forest & Bird



# Restoring the Long Yellow Ribbon

## Plant care for the summer!

Dutton's Bridge pull-off, Owaka Hwy  
4<sup>th</sup> Saturday of every month  
meet at **2pm** stay half an hour or half a day!

**25<sup>th</sup> January, 22<sup>nd</sup> February, 22<sup>nd</sup> March**

Together we are planting back the kōwhai, ribbonwood, mataī, tōtara, mikimiki and others on the Owaka River side.

Bring shears, flax knife & gloves, if possible; plants (& refreshments) provided.

**All welcome 😊**

**Wear sturdy footwear and suitable clothing, hat etc. for the weather. For details contact: Catriona txt:0223 914 698**

**Please note: CCI are not responsible for the accuracy of the material/information that has been supplied for the Newsletter, this is the responsibility of the author/s of the article/s. The CCI reserve the right not to include material/information in the Newsletter if deemed inappropriate.**

